



KRIGIS



An Eye Beneath
the Surface



See To Know,
Know to Master



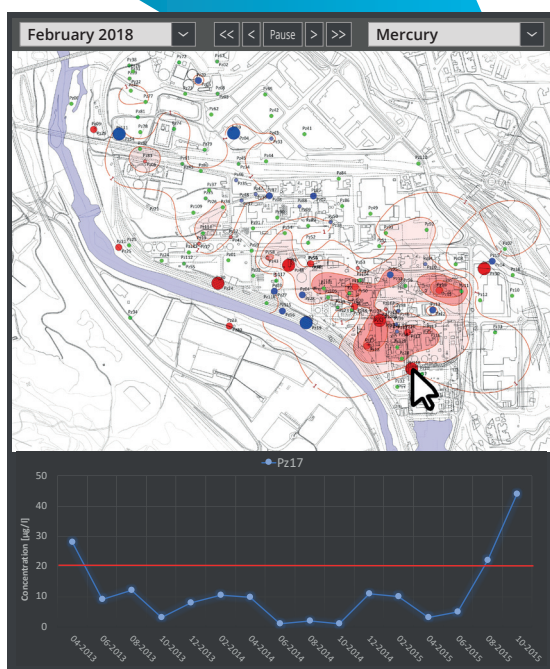
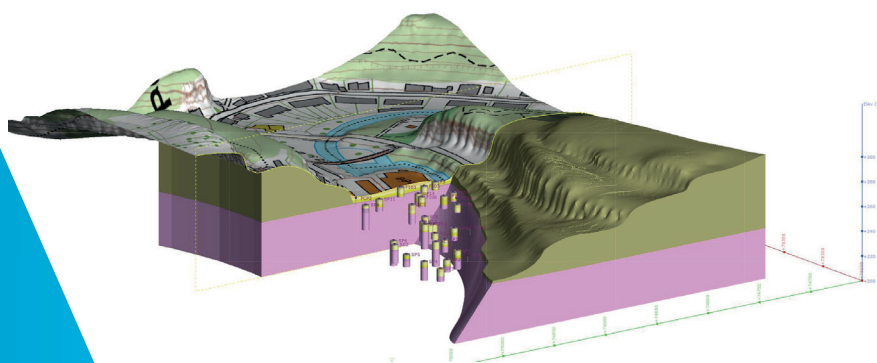
ARTESIA

HYDROGEOLOGY &
ENVIRONMENT

Large industrial sites that exploit groundwater or have to manage groundwater contamination generally have very complex databases where thousands of results are stored (chemical analyses, water levels, technical parameters). Environmental managers do not have an overview and therefore have little control over the situation, which can lead to productivity losses, extremely costly pollutions to clean up, lawsuits and a deteriorating corporate image.

KRIGIS brings you the solution to control your underground and increase your productivity.

KRIGIS is a specific tool for the management and valuation of groundwater



ON MAP CONSULTATION WITH INTERPOLATION

The instantaneous interpolation of the concentrations, generated automatically, provides at a glance a map of the state of the site, highlighting the areas to be monitored.

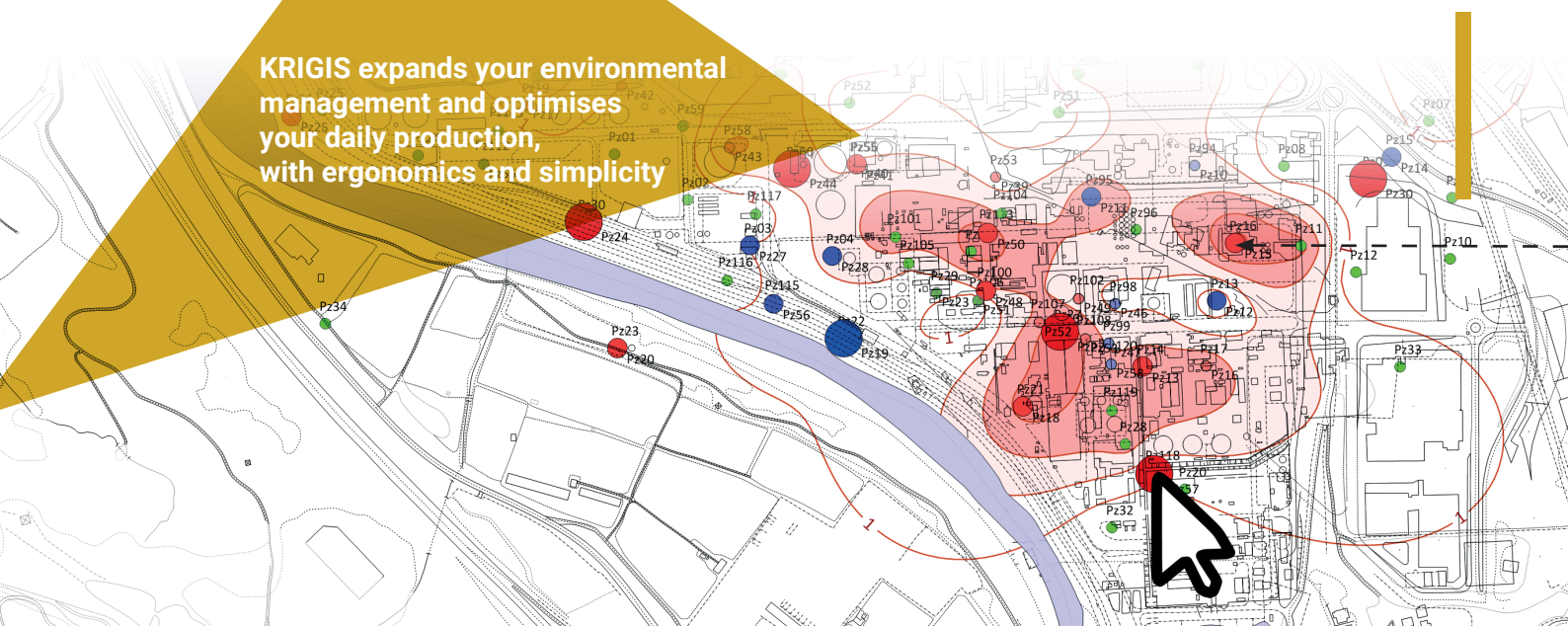
By navigating from one measurement campaign to another with a simple click, you get a film of the evolution of the concentrations up to today, which allows you to anticipate the future evolution and make strategic decisions of production, decontamination or containment.

KRIGIS is very interactive: by clicking on a point, you get its history.

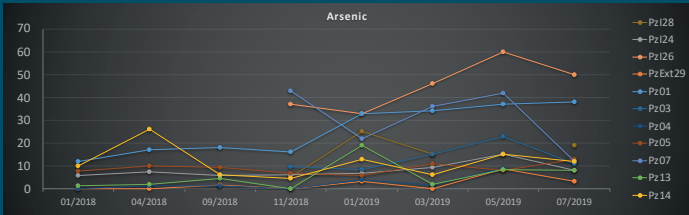
ALERT SYSTEM

KRIGIS detects worrisome increases and asks to consult the history of certain points designated by the system

KRIGIS expands your environmental management and optimises your daily production, with ergonomics and simplicity



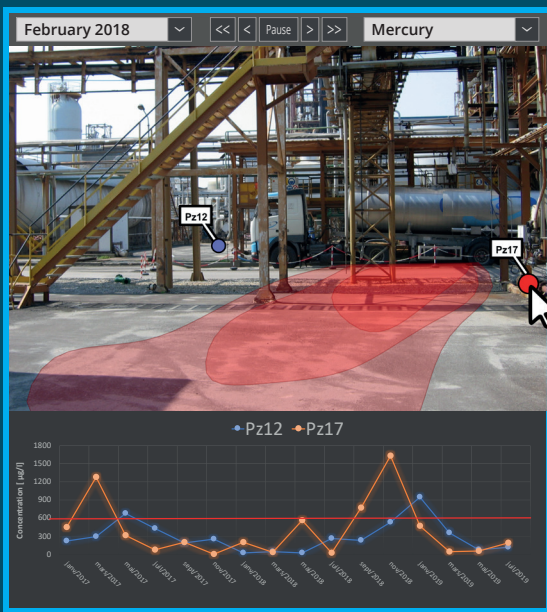
One tab per item One tab per parameter One tab per campaign



	01/2018	04/2018	09/2018	11/2018	01/2019	03/2019	05/2019	07/2019
Pz01	15.01	17.5	< 1	< 1	5.40	1.80	14.00	3.30
Pz02	15.01	1.6	< 0.01	< 0.01	< 0.01	< 0.01	< 0.01	< 0.01
Pz03	15.01	3.8	< 0.01	< 0.01	< 0.01	< 0.01	< 0.01	< 0.01
Pz04	15.01	3.3	< 0.01	< 0.01	< 0.01	< 0.01	< 0.01	< 0.01
Pz05	15.01	1.2	< 0.005	< 0.005	< 0.005	< 0.005	< 0.005	< 0.005
Pz06	15.01	2.7	< 0.001	< 0.001	< 0.001	< 0.001	< 0.001	< 0.001
Pz07	15.01	4	< 0.5	< 0.5	< 0.5	< 0.5	< 0.5	< 0.5
Pz08	15.01	4	< 0.01	< 0.01	< 0.01	< 0.01	< 0.01	< 0.01
Pz09	15.01	4	< 0.01	< 0.01	< 0.01	< 0.01	< 0.01	< 0.01
Pz10	15.01	1.1	< 5	< 5	< 5	< 5	< 5	< 5
Pz11	15.01	0.6	< 0.01	< 0.01	< 0.01	< 0.01	< 0.01	< 0.01
Pz12	15.01	8.7	< 0.01	< 0.01	< 0.01	< 0.01	< 0.01	< 0.01
Pz13	15.01	8	< 0.01	< 0.01	< 0.01	< 0.01	< 0.01	< 0.01
Pz14	15.01	2.4	< 0.01	< 0.01	< 0.01	< 0.01	< 0.01	< 0.01
Pz15	15.01	3.4	< 0.005	< 0.005	0.24	0.88	< 0.005	< 0.005
Pz16	15.01	7	< 0.01	0.13	0.20	2.50	4.80	11.80
Pz17	15.01	6	< 0.01	0.4	0.39	0.28	23.00	2.80
Pz18	15.01	2.7	< 0.01	< 0.01	< 0.01	< 0.01	< 0.01	< 0.01
PPz07	15.01	0.6	< 1	2.10	< 1	87.00	1.20	14.00
PPz08	15.01	0.8	< 10	< 10	< 10	< 10	< 10	< 10
PPz09	15.01	3.3	< 1	1.40	< 1	43.00	254.00	7.40
PPz10	15.01	2.3	< 0.01	< 0.01	< 0.01	< 0.01	< 0.01	< 0.01
PPz11	15.01	3.4	< 0.01	< 0.01	< 0.01	< 0.01	< 0.01	< 0.01
PPz12	15.01	2.0	< 0.005	< 0.005	< 0.005	< 0.005	< 0.005	< 0.005
PPz13	15.01	1.4	< 0.005	< 0.005	< 0.005	< 0.005	< 0.005	< 0.005
PPz14	15.01	1.8	< 0.01	< 0.01	< 0.01	< 0.01	< 0.01	< 0.01
PPz15	15.01	2.4	< 0.001	< 0.001	< 0.001	< 0.001	< 0.001	< 0.001
PPz16	15.01	0.6	< 0.01	< 0.01	< 0.01	< 0.01	< 0.01	< 0.01

TABLE CONSULTATION

The data tables remain easily accessible and are abundant in analysis support resources: automatic charts, crucial statistics, ability to analyse a particular campaign, well or chemical compound on an individual basis. It is ideal for detailed analysis in a familiar environment with simple spreadsheet.

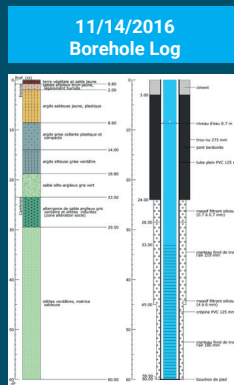


FACILITATE FIELD RECONNAISSANCE

Thanks to the application on tablet / smartphone, the maps can be consulted in the field in plan mode or in augmented reality, to better visualise what there is under your feet, in particular in anticipation of excavation work and management of contaminated land.

In the field, thanks to the data entry interface, measurements such as water levels, pH values or pumped volumes can be encoded immediately.

Georeferenced photographs or films of certain sites can also be included in the database for future reference.



YOUR DATABASE BECOMES MUCH RICHER THAN ANALYSIS LISTS.

In addition to measurements, you have maps, photos and field films, drilling logs and all this accessible on plan.

KRIGIS illuminates in a very visual way complex and sensitive issues of the underground, it brings you a globalized mastery of your underground

A RELIABLE DATABASE - SMART DATA IMPORT

Powerful import tools allow for debugging of data before it is entered into the database. Intelligent systems allow KRIGIS to recognize encoding errors and to suggest corrections, spelling of well names and chemical compounds are adjusted, units

are changed automatically, water depths are transformed into piezometric levels and the pumped volumes generate flows. Statistical analysis warns against unrealistic or very worrisome measures.

KRIGIS strengthens your position towards control authorities and avoids major damages by adopting a preventive management

KRIGIS HELPS YOU COMMUNICATE

Thanks to its ability to select groups of wells or groups of chemical compounds, the analysis is very flexible. Thanks to its sharing tools, KRIGIS allows you to easily select the data to share with a collaborator. The **app KRIGIS Viewer** allows to visualize shared data, it is extremely intuitive. It is therefore easily usable by a working group.

✓	ID#	#01b	
📅	SAMPLING DATE	10-08-2017	
★	POINT	PZ 24	DICTIONARY POINTS
🧪	PARAMETER	Mercury	DICTIONARY PARAMETERS
⬇️	WORTH	4.5 Unit mg/l	DICTIONARY UNITS
📖	SOURCE	Data_august.xlsx	
💬	COMMENT	After 20 minutes of pumping	
📷	TAKE A PICTURE / VIDEO		VALIDATE



**WASTE NO MORE TIME,
MANAGE YOUR RISKS,
SECURE YOUR PRODUCTION**

CONTACT US NOW :
+32 (0)496 18 38 20
info@artesia.tech
www.artesia.tech